

# ONAMBA

An aerial photograph of a city, likely Tokyo, with a dense urban landscape. A network of white dots connected by thin lines is overlaid on the image, suggesting a digital or technological theme. The network is more prominent in the upper right quadrant. A large, dark blue, stylized arrow shape points upwards from the bottom left towards the center of the image.

## ACCESS TO THE FUTURE

COMPANY PROFILE



# Toward Becoming a Global Comprehensive Wire System Manufacturer that Contributes to Carbon-Free Society

Our company is a comprehensive wire system manufacturer that has four major business areas: Wires & Cables; Wire Harnesses; Renewable Energy Resources; and Harness Processing Machinery & Parts.

Since early stage of company, we have pursued overseas production of wire harnesses for consumer products and we have grown into a global company with 13 locations across 7 countries.

By providing products, and services that meet our customers' needs, we have grown into the largest Japanese manufacturer of wire harnesses for consumer and industrial devices, and the No. 1 photovoltaic wiring units (PVU®) producing company in its industry.

In addition to making improvements in our core technologies and expanding the global growth of each major business areas, we will strengthen competitiveness through corporate-wide synergistic efforts.

Based on our Management Philosophy, our company will contribute to building a carbon-free society, and aim to a company that can benefit our customers, our local communities, our employees and their families and our shareholders.

## Philosophy

### ONAMBA Group Corporate Philosophy

1. We continuously aim to initiate the innovation and contribute the world by creating distinctive value.
2. We continuously promote our business standing with worldwide point of view.
3. We always concern for the environmental issue and implement speedy action for the best quality on our products to our worldwide customer's satisfaction.



For more details [Company Information]  
<https://en.onamba.co.jp/company>

## Sustainability

For more details [Sustainability]  
<https://en.onamba.co.jp/company/sustainability>

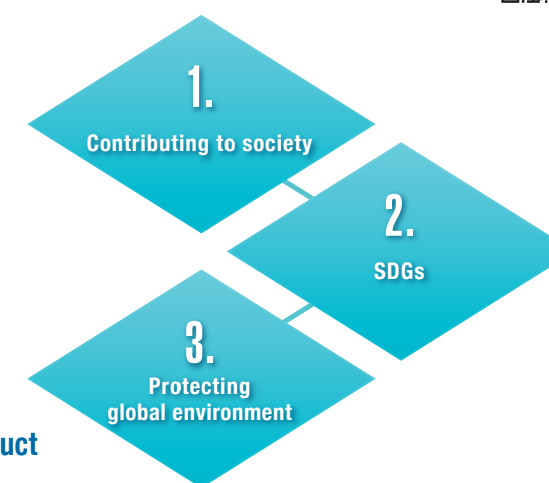


### Approach to CSR

Onamba's mission is to develop and provide safety and eco-friendly products, technologies, and services, to realize better global environment, and to contribute developing better society. We believe we will earn the trust of society by engaging in corporate activities with integrity and sincerity.

At Onamba Group, as part of our commitment to CSR (Corporate Social Responsibility), we focus on :

1. Contribute to society through our Corporate Code of Conduct
2. Pursue initiatives toward achieving SDGs through our business activities
3. Protect the environment and prevent from pollution through the implementation of our Environmental Policy



### Initiatives in achieving SDGs

We will contribute to the realization of sustainable social environment through engineering expertise cultivated in our business field.



### Environmental Policy

1. Protecting the environment and preventing pollution
2. Adhering to environment-related laws and regulations
3. Setting and achieving environmental objectives

## Company Information

For more details [Company Information]  
<https://en.onamba.co.jp/company/info>



Company name	: Onamba Co., Ltd.
Headquarter	: 3-1-27 Fukaekita, Higashinari-ku, Osaka 537-0001 Phone : +81-6-6976-6101 / Fax: +81-6-6976-6100
Founded	: September 1941
Capital	: 2.323 billion yen
Representatives	: Seiji Endo, Chairman Tadatoshi Kijima, President
No. of employees	: Approx. 140 (Group total: Approx.4,000)
Business activities	: Manufacturing and sales of electronic components, general-purpose electric wires and communication cables for consumer electronic devices, information office equipment and industrial electronic devices and related business
Stock listing	: Tokyo Stock Exchange Standard Market (securities code 5816)
Fiscal year-end	: December

 オーナンバ株式会社  
<https://en.onamba.co.jp>





# Business Evolution

**We will respond to diverse needs with a global perspective and state of the art technology**

Higher levels of technology and quality are required in advanced industries with rapid technological evolution. We will continue to create new business areas with cutting-edge technology and development capabilities, along with electronics-related equipment used in a wide range of business field.

## Wire Harnesses



For more details

- ◎Harnesses for automobile
- ◎Harnesses for industrial equipment
- ◎Harnesses for consumer product



The wire harnesses of our core business are used for essential connecting devices in every electrical products.

We will propose and supply wide range of products, by utilizing the assembly technologies and expertise that we have developed, responding to progress of digitalization and technological innovation.

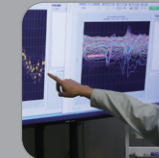


## Renewable Energy Resources



For more details

- ◎PVU-Finder® : Monitoring and control system
- ◎E&E-Solution® : Self-consumption integrated system
- ◎Extension cables and solar-related products



Our remote solar monitoring systems have installed at more than 2,900 sites. We were the only monitoring and control system manufacturer selected by Kyushu Electric Power Company for their verification project, and many users have selected our systems. In addition, E&E-Solution® which combines control of power generation, power storage, and energy conservation in a single system has been expanding its connectivity with various industrial storage battery systems.

## Wires & Cables



For more details

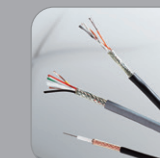
【Products for Japan domestic】

- ◎Wires and cables for machine internal
- ◎Coaxial cables
- ◎Cables for medical and antibacterial application
- ◎Cables for solar power generation

【Products for Overseas】

- ◎Cables for fixed applications
- ◎Cables for moving applications

- ◎Environmentally friendly cable



The lineup of wires and cables offered by Onamba allows us to propose the best solutions to customers from four perspectives such as durability, noise resistance, environmental considerations, and flexibility, all based on extensive experience developed over many years. We will continue to contribute to industrial fields in Japan and overseas.

## Harness Processing Machinery and Parts



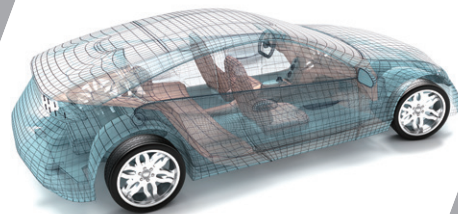
For more details

- ◎Connectors for automobile
- ◎Equipment and machinery



To meet diversifying connector needs, we are engaged in integrated production from development of high value added connector to mass production, based on our die machining technology.

We propose harness processing equipment that pursues high speed, high accuracy, and labor saving by making full use of the technical capabilities cultivated through abundant experience.



# Network

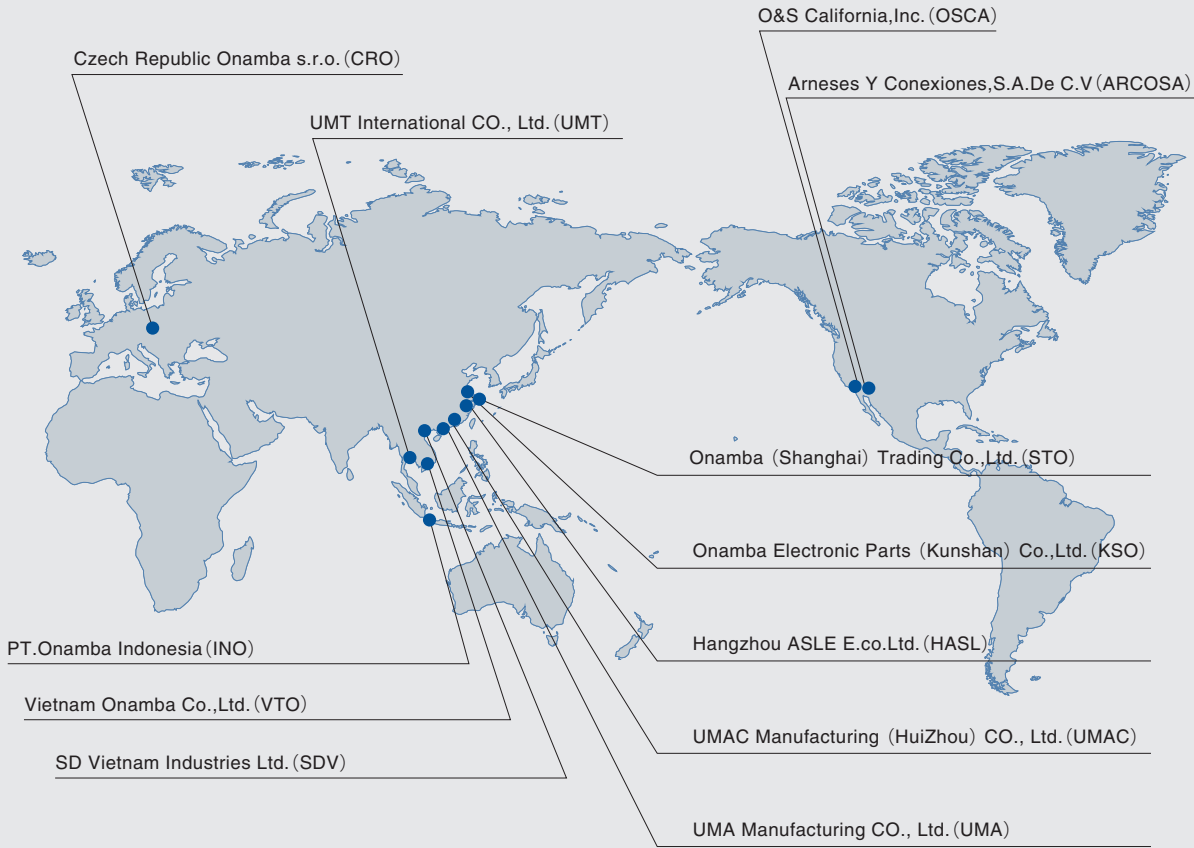
Globally promote quick response that closely meet market needs

Global Locations

Expand advanced technology and quality globally



For more details  
[Global Locations]



Japan Domestic Locations

Production locations closely aligned with customer needs



For more details  
[Japan Domestic Locations]

